



THE  
Franklin  
CONFERENCE  
SCHOOLS BY DESIGN: INNOVATIVE INTENTIONS



A series of public forums presented by  
The Philadelphia Inquirer and The University of Pennsylvania

*Sponsored by*

William Penn Foundation  
Penn Institute for Urban Research

*Produced by*

The Editorial Board of the Philadelphia Inquirer  
Penn Praxis of the University of Pennsylvania School of Design  
Center for School Study Councils of the University of Pennsylvania Graduate School of Education  
Design Advocacy Group of Philadelphia

*With the support of*

The School District of Philadelphia  
Philadelphia School Reform Commission

American Architectural Foundation  
Athenaeum of Philadelphia  
Cartographic Modeling Lab  
Center City District  
Charter High School for Architecture & Design  
Clafien Associates  
Community Design Collaborative  
Concordia, Inc.  
Council of Real Estate  
Delaware Valley Green Building Council  
Delaware Valley Regional Planning Commission  
Education Alliance at Brown University  
Education First Compact  
Enterprise Center

KnowledgeWorks Foundation  
National Clearinghouse for Educational Facilities  
Philadelphia Chapter of the American Institute of Architects  
Philadelphia City Planning Commission  
Philadelphia Education Fund  
Philadelphia Home and School Council  
Pennsylvania Horticultural Society  
Philadelphia Public School Notebook  
Philadelphia Management  
The Rotunda  
University City District  
University City Review  
World Café Live



*Franklin Conference on School Design*  
*Public Forum*





# *A Civic Vision for Philadelphia Schools*

## *Public Forum*



# *A Civic Vision for Philadelphia Schools*

## *Public Forum*



# *A Civic Vision for Philadelphia Schools*

## *Principle Sessions*



# A Civic Vision for Philadelphia Schools

## Creating the Principles

	May 17 A Ent. Center	May 17 B Ent. Center	May 19 A NE High	May 24 A CAPA	May 24 B CAPA	May 24 C CAPA	May 24 D CAPA	May 26 A Dobbins	June 1 A West	June 1 B West	June 1 C West	June 1 D West	June 1 E West	June 1 F West	June 1 G West
<b>Principles</b>	Group 1	Group 2	Group 3	Group 4	Group 5	Group 6	Group 7	Group 8	Group 9	Group 10	Group 11	Group 12	Group 13	Group 14	Group 15
1. Aesthetics matter in schools! Both in original building design and continuous, attractive display/maintenance throughout	X			X	X	X				X					
2. Schools should be open, visible & welcoming/ navigable	X			X	X	X		X	X		X	X			X
3. Should be designed w/ adequate light/ windows/ air to facilitate/ stimulate learning						X	X	X	X	X	X	X			
4. Schools should not have the "prison" feel and coloring	X		X				X					X			
5. School building should preserve history						X					X	X	X		X
6. School building should be restored/adapted so it is up-to-speed with 21 <sup>st</sup> century, breathes new life											X	X			
7. The school should have a campus feel	X							X				X		X	
8. The school should be small			X						X				X		
9. Schools should have adequate and well-maintained landscaping/ green space					X	X		X	X	X	X	X			
10. Public amenities should be linked to public schools (i.e. parks, libraries, etc)		X	X	X		X	X	X			X				



# *A Civic Vision for Philadelphia Schools*

## *The Franklin Principles*

### *A Welcoming Place*



# *A Civic Vision for Philadelphia Schools*

## *The Franklin Principles*

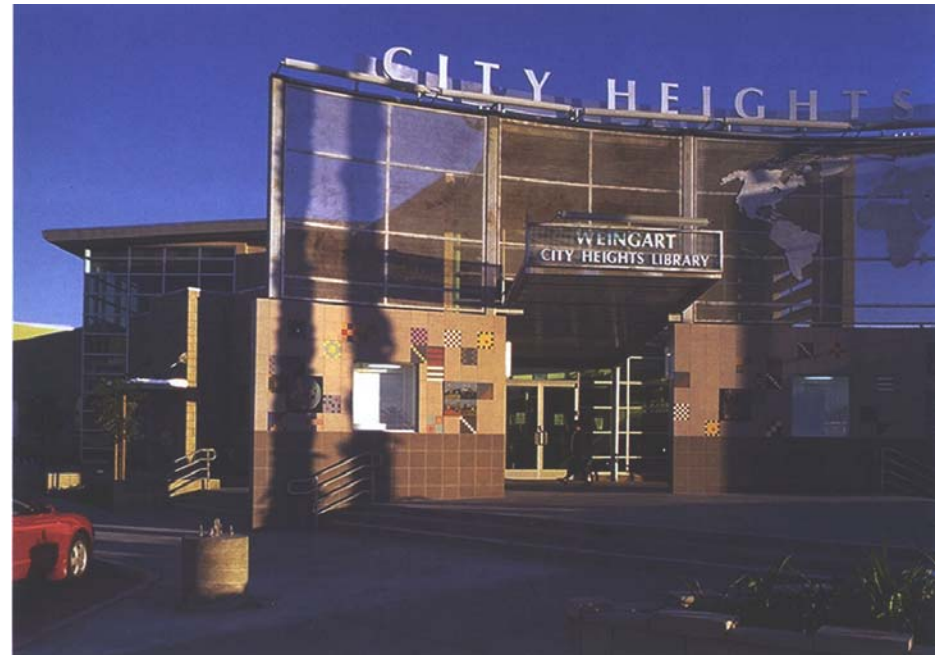
*It's a School, Not a Prison*



# *A Civic Vision for Philadelphia Schools*

## *The Franklin Principles*

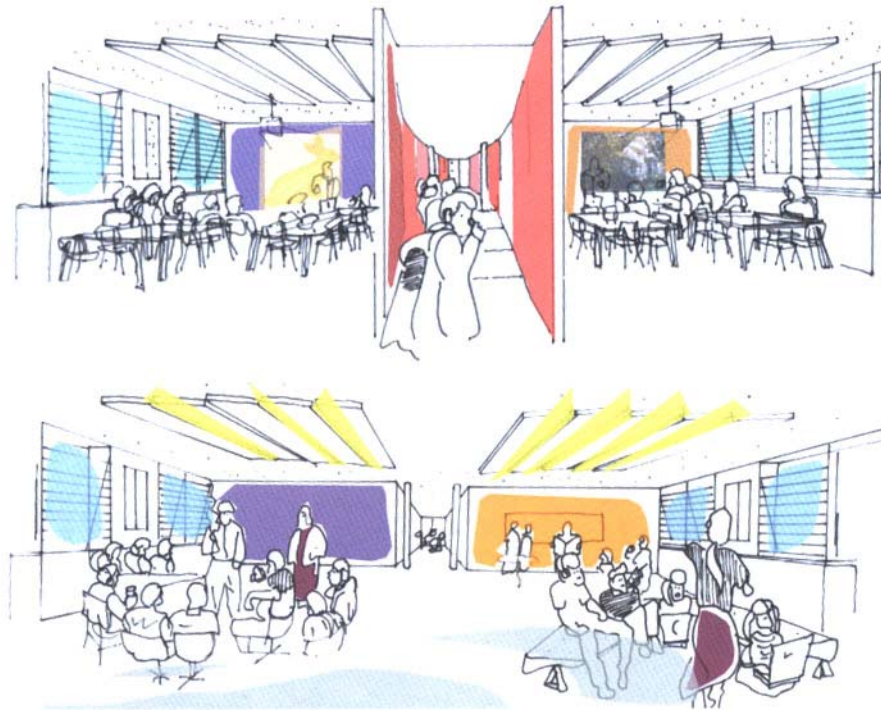
*Interact, Interact, Interact*



# *A Civic Vision for Philadelphia Schools*

## *The Franklin Principles*

### *Plan on Change*



# *A Civic Vision for Philadelphia Schools*

## *The Franklin Principles*

*Healthy Buildings, Healthier Children*



# *A Civic Vision for Philadelphia Schools*

## *The Franklin Principles*

### *Smart and Green*



# *A Civic Vision for Philadelphia Schools*

## *The Franklin Principles*

*They're Called "Public Schools" for a Reason*



# *A Civic Vision for Philadelphia Schools*

## *The Franklin Principles*

- *A welcoming place*
- *It's a school, not a prison*
- *Interact, interact, interact*
- *Plan on change*
- *Healthy buildings, healthier children*
- *Smart and green*
- *They're called "public schools" for a reason*



# *A Civic Vision for Philadelphia's Schools Charrette*



# *A Civic Vision for Philadelphia Schools*

## *Charrette*

### *Commodore Barry School Site*

*Can a K to 8 school for 850-students fit on a 1-acre site at 59<sup>th</sup> and Race Streets?*

*The existing school building was built in 1908 and was decommissioned in 2004.*

# *A Civic Vision for Philadelphia Schools*

## *Charrette*

### *Commodore Barry School Site*

*Can a K to 8 school for 850-students fit on a 1-acre site at 59<sup>th</sup> and Race Streets?  
The existing school building was built in 1908 and was decommissioned in 2004.*

### *22<sup>nd</sup> and Arch School Site*

*Is it feasible to convert a former industrial building in Center City into a science and engineering academy associated with The Franklin Institute and the Academy of Natural Sciences?*

# *A Civic Vision for Philadelphia Schools*

## *Charrette*

### *Commodore Barry School Site*

*Can a K to 8 school for 850-students fit on a 1-acre site at 59<sup>th</sup> and Race Streets?  
The existing school building was built in 1908 and was decommissioned in 2004.*

### *22<sup>nd</sup> and Arch School Site*

*Is it feasible to convert a former industrial building in Center City into a science and engineering academy associated with The Franklin Institute and the Academy of Natural Sciences?*

### *Logan Triangle Site*

*What would it look like if a new 1000-student high school was the centerpiece of a neighborhood revitalization effort on the site of the “sinking homes” of Logan?*

# *A Civic Vision for Philadelphia Schools Charrette*



# A Civic Vision for Philadelphia Schools Charrette



# *A Civic Vision for Philadelphia Schools* *Charrette*



*A Civic Vision for Philadelphia Schools*  
*Commodore Barry School Site*

*Can a K to 8 school for 850-students fit on a 1-acre site at 59<sup>th</sup> and Race Streets?  
The existing school building was built in 1908 and was decommissioned in 2004.*



# *A Civic Vision for Philadelphia Schools*

## *Commodore Barry School Site*



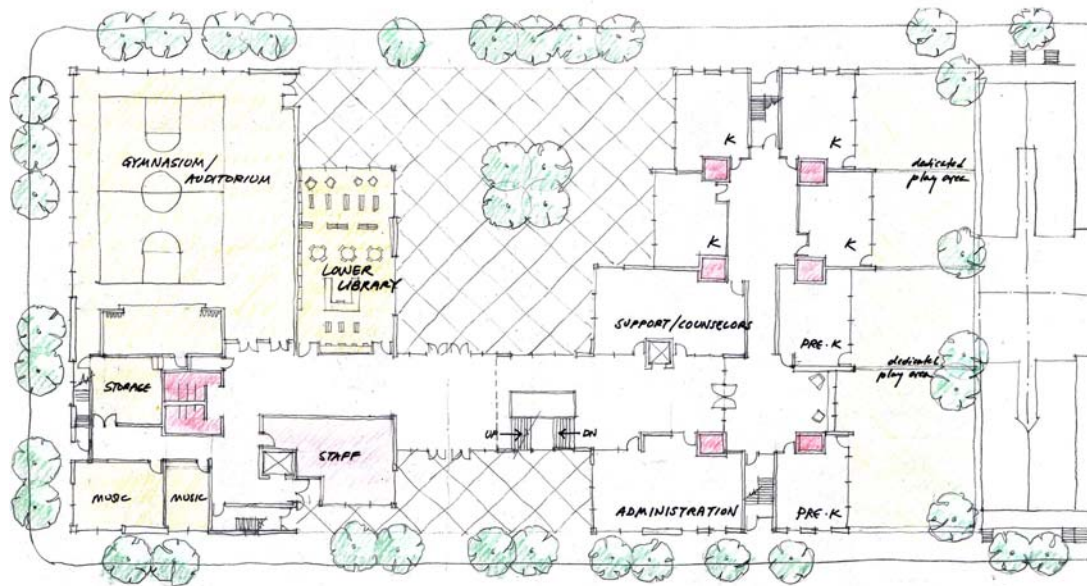
# A Civic Vision for Philadelphia Schools

## Commodore Barry School Site

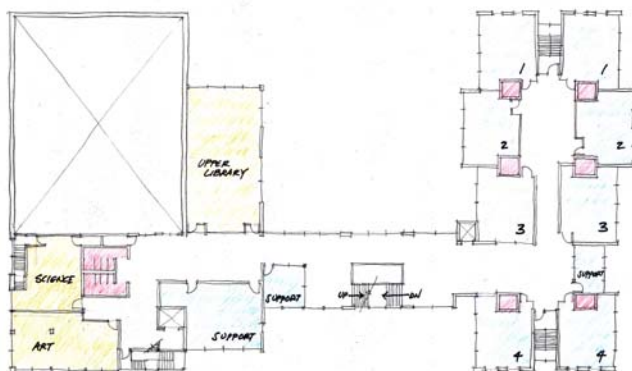


# A Civic Vision for Philadelphia Schools

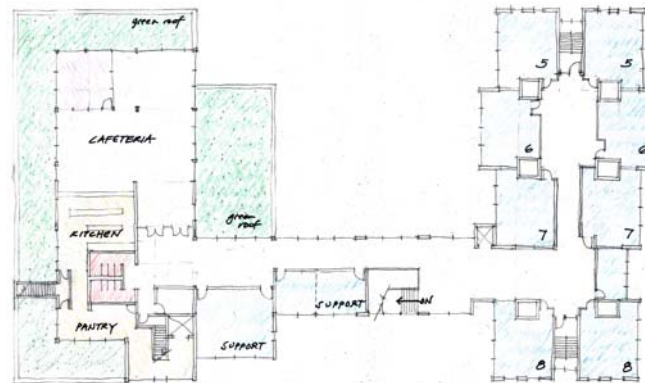
## Commodore Barry School Site



BARRY SCHOOL · FIRST FLOOR



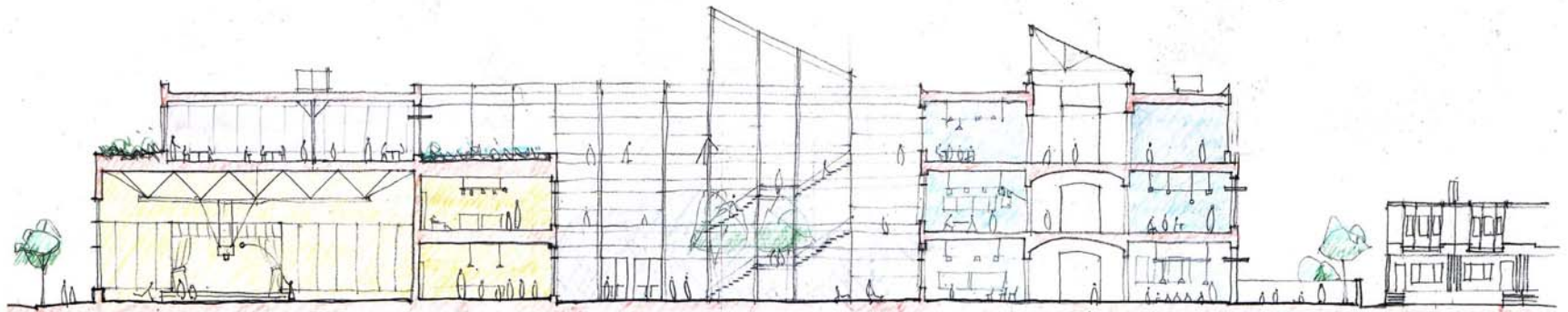
BARRY SCHOOL · SECOND FLOOR



BARRY SCHOOL · THIRD FLOOR

# A Civic Vision for Philadelphia Schools

## Commodore Barry School Site



BARRY SCHOOL · SECTION LOOKING EAST

# *A Civic Vision for Philadelphia Schools*

## *Commodore Barry School Site*



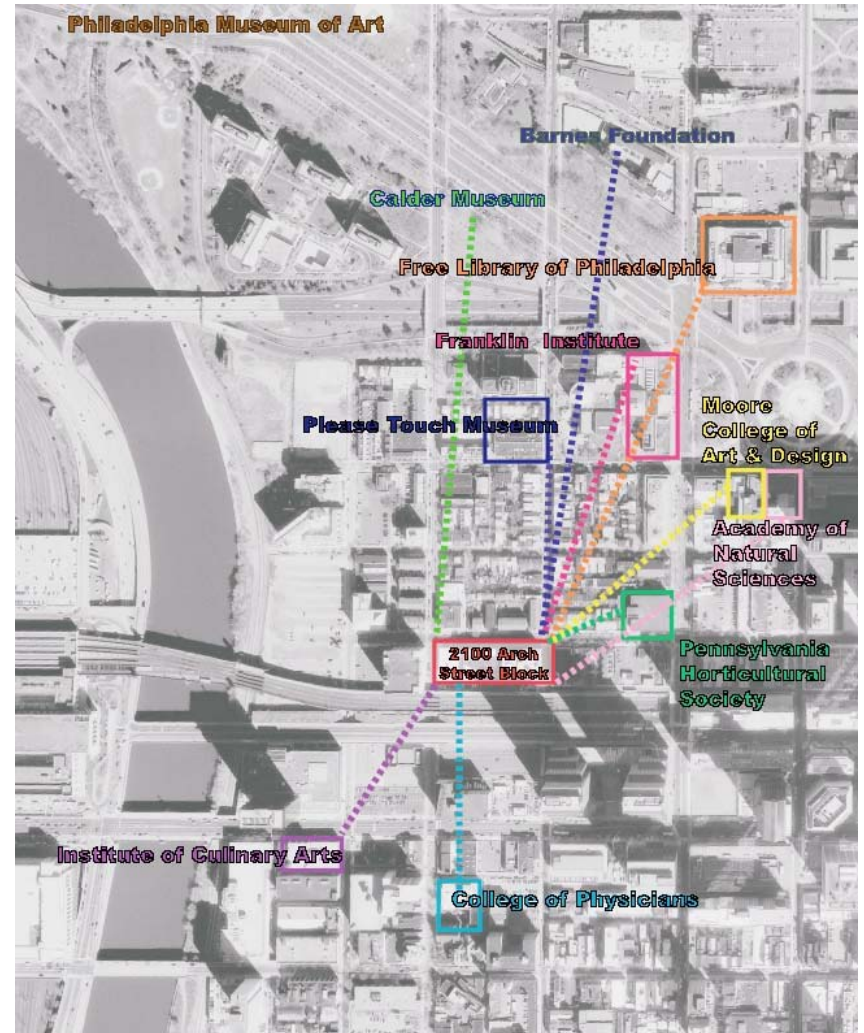
# *A Civic Vision for Philadelphia Schools*

## *22<sup>nd</sup> and Arch School Site*

*Is it feasible to convert a former industrial building in Center City into a science and engineering academy associated with The Franklin Institute and the Academy of Natural Sciences?*

# A Civic Vision for Philadelphia Schools

## 22<sup>nd</sup> and Arch School Site



# *A Civic Vision for Philadelphia Schools*

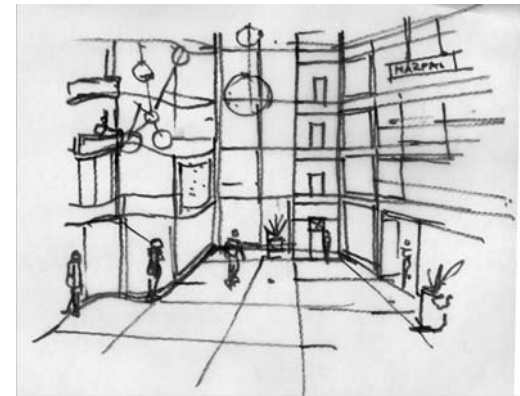
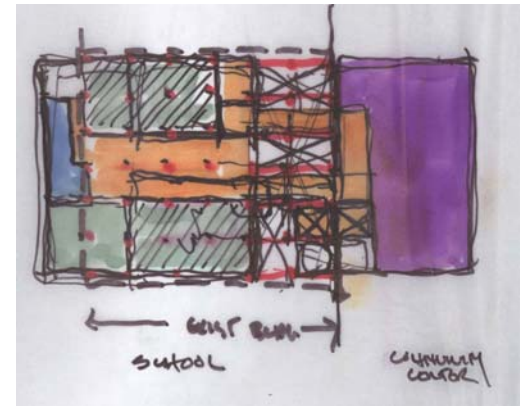
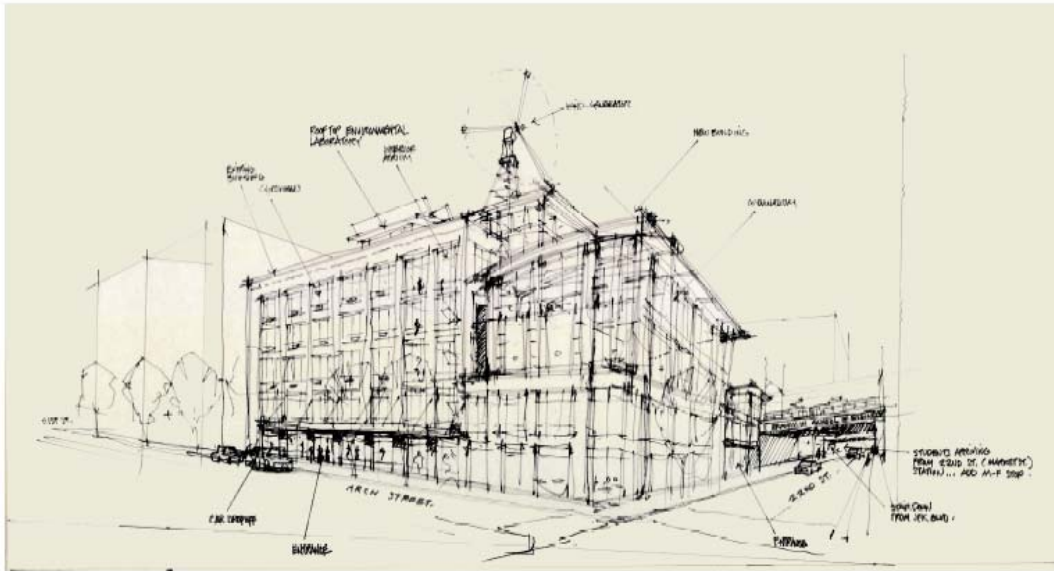
## *22<sup>nd</sup> and Arch School Site*





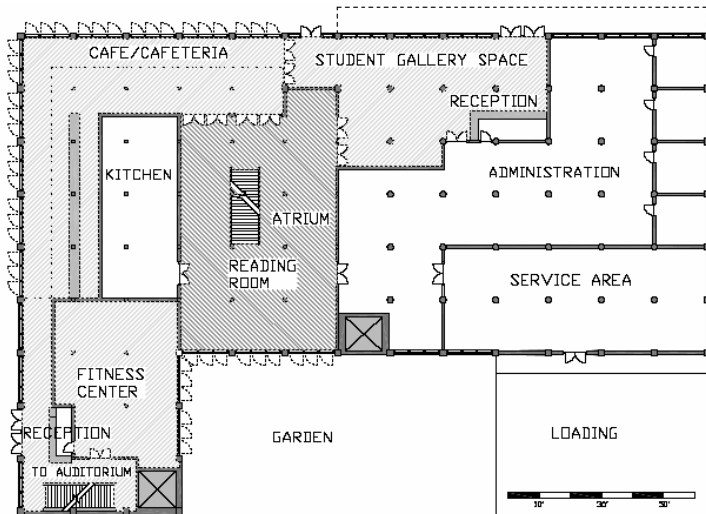
# A Civic Vision for Philadelphia Schools

## 22<sup>nd</sup> and Arch School Site



# A Civic Vision for Philadelphia Schools

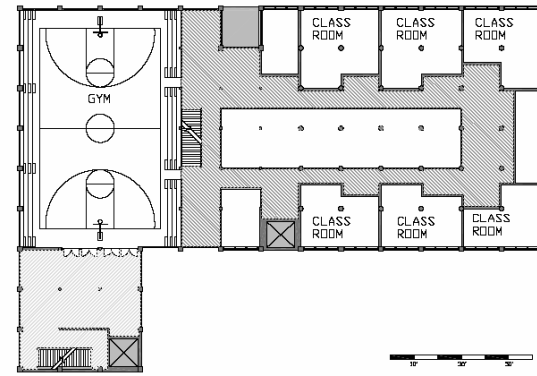
## 22<sup>nd</sup> and Arch School Site



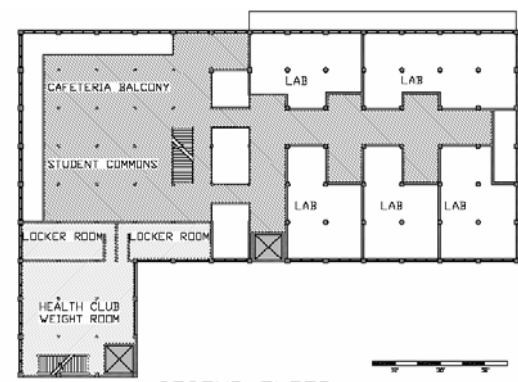
GROUND FLOOR

MIXED STUDENT/PUBLIC SPACE

STUDENT ONLY SPACE



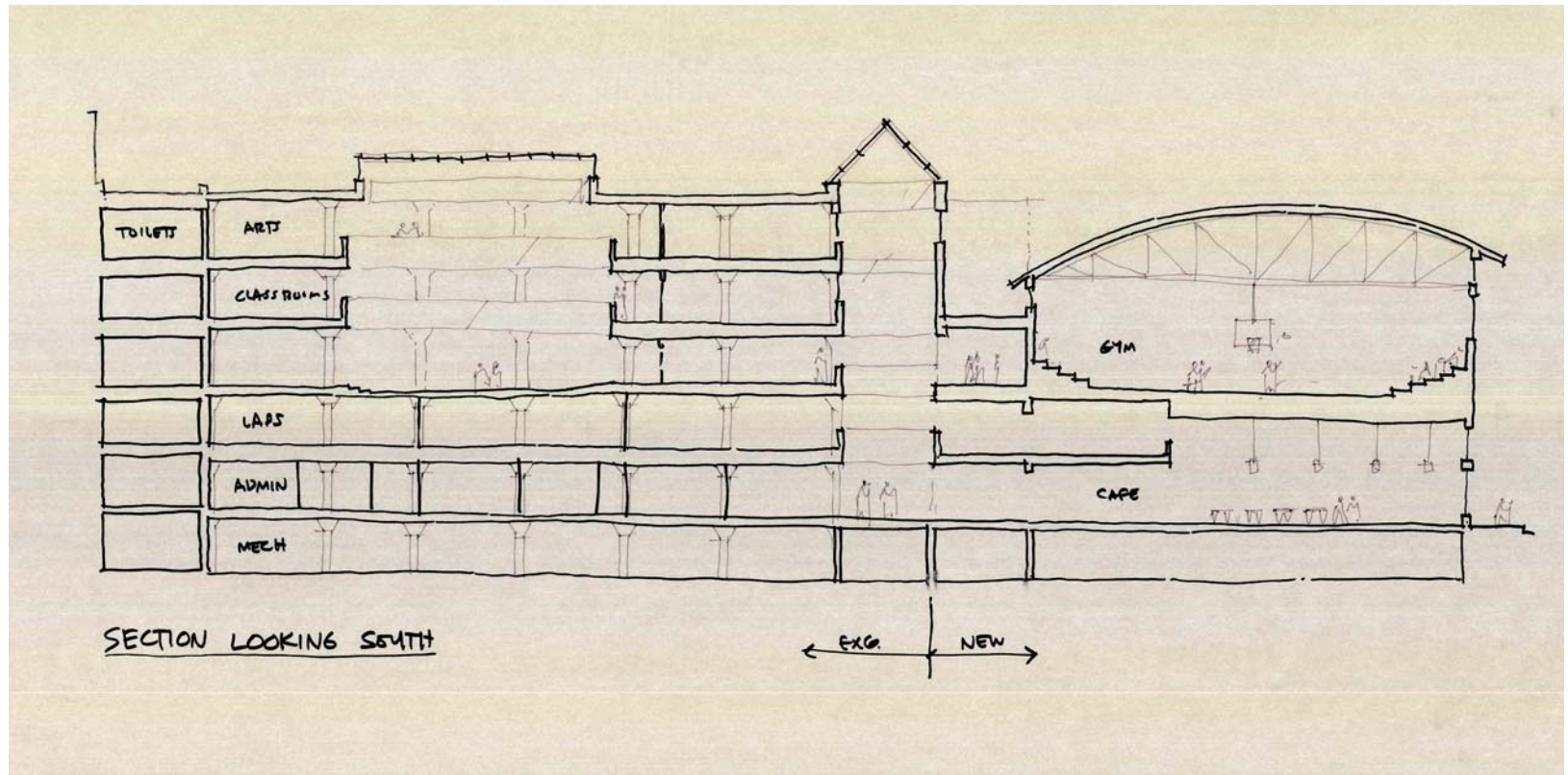
THIRD FLOOR



SECOND FLOOR

# A Civic Vision for Philadelphia Schools

## 22<sup>nd</sup> and Arch School Site



# A Civic Vision for Philadelphia Schools

## 22<sup>nd</sup> and Arch School Site



# *A Civic Vision for Philadelphia Schools*

## *Logan Triangle Site*

*What would it look like if a new 1000-student high school was the centerpiece of a neighborhood revitalization effort on the site of the “sinking homes” of Logan?*

# *A Civic Vision for Philadelphia Schools*

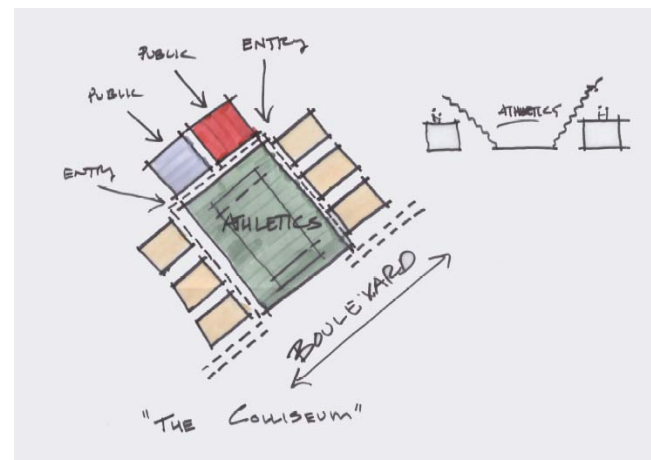
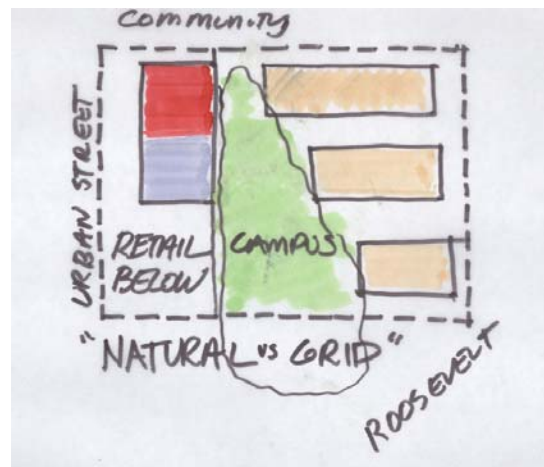
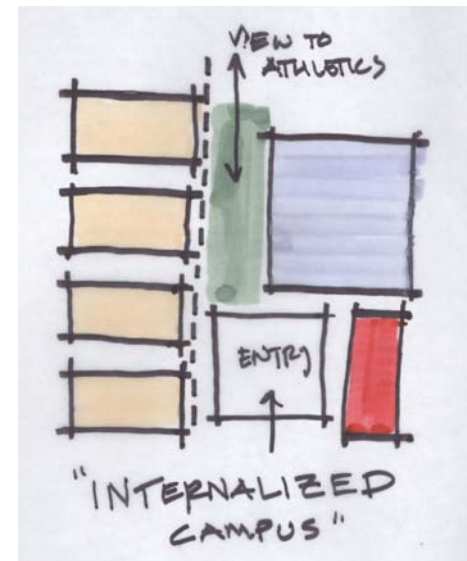
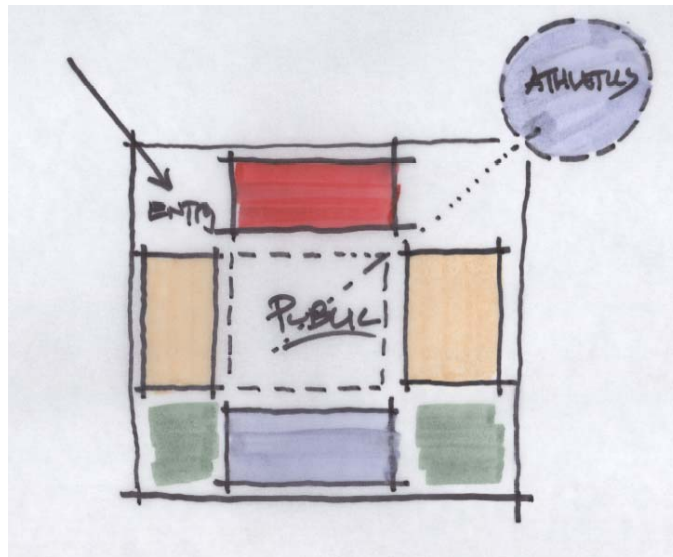
## *Logan Triangle Site*





# A Civic Vision for Philadelphia Schools

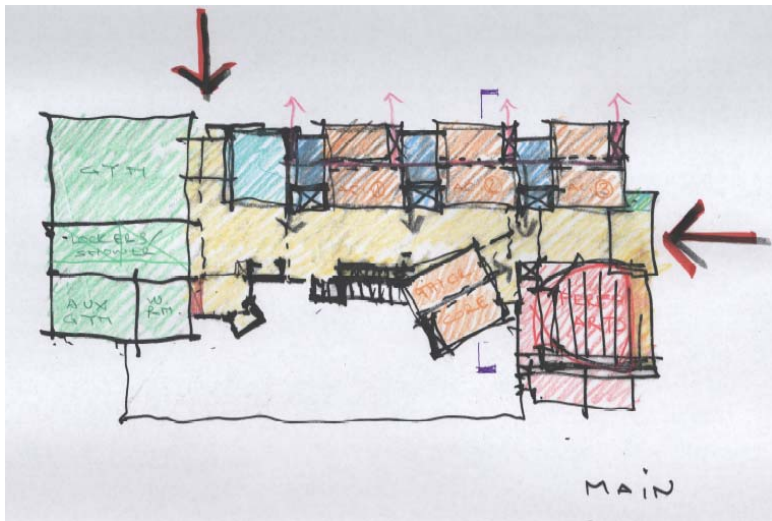
## Logan Triangle Site





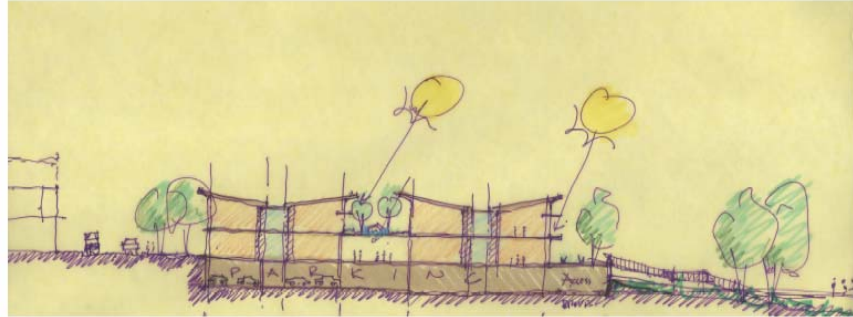
# A Civic Vision for Philadelphia Schools

## Logan Triangle Site



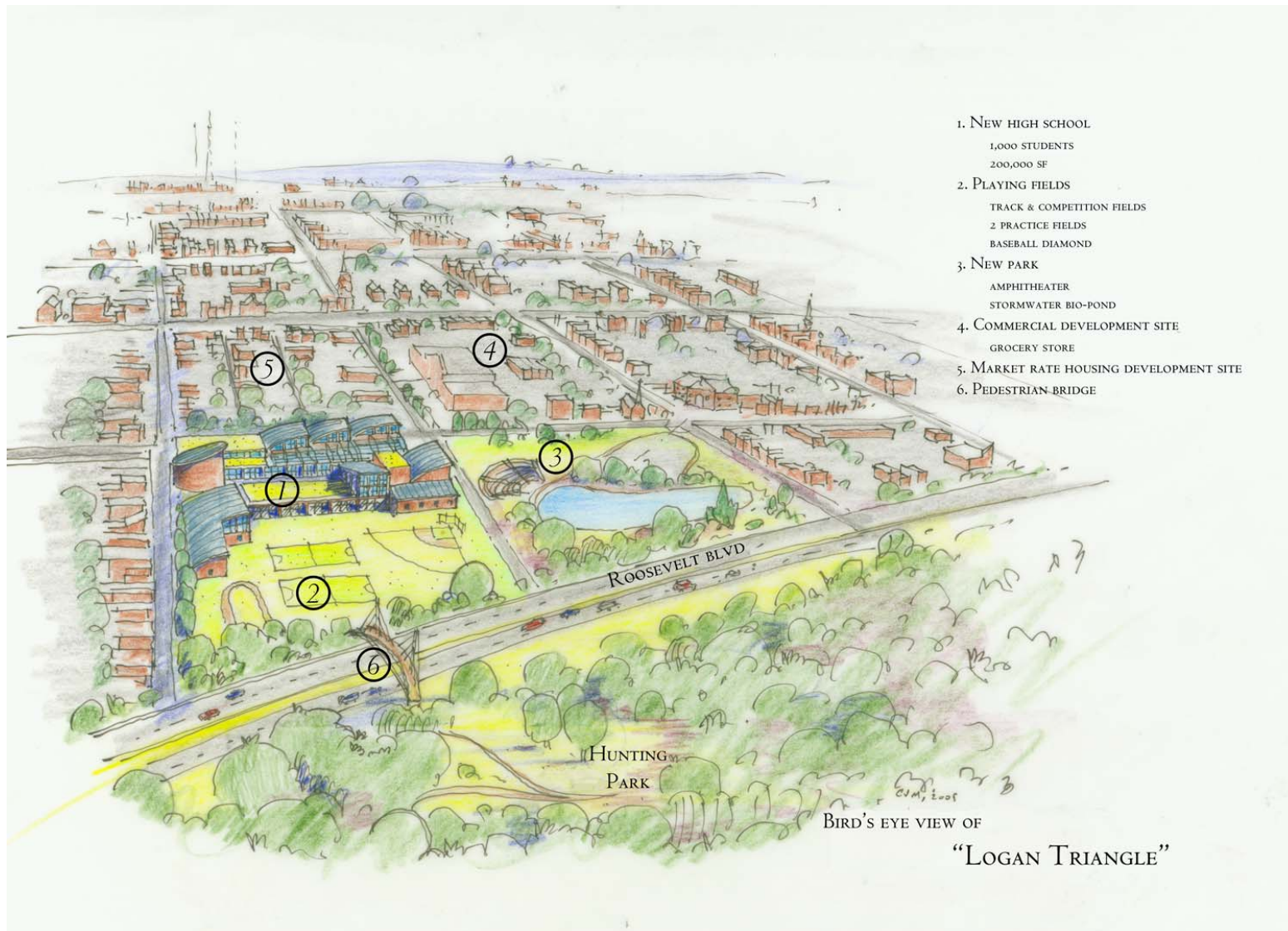
# *A Civic Vision for Philadelphia Schools*

## *Logan Triangle Site*



# A Civic Vision for Philadelphia Schools

## Logan Triangle Site





A series of public forums presented by  
The Philadelphia Inquirer and The University of Pennsylvania

*Sponsored by*

William Penn Foundation  
Penn Institute for Urban Research

*Produced by*

The Editorial Board of the Philadelphia Inquirer  
Penn Praxis of the University of Pennsylvania School of Design  
Center for School Study Councils of the University of Pennsylvania Graduate School of Education  
Design Advocacy Group of Philadelphia

*With the support of*

The School District of Philadelphia  
Philadelphia School Reform Commission

American Architectural Foundation  
Athenaeum of Philadelphia  
Cartographic Modeling Lab  
Center City District  
Charter High School for Architecture & Design  
Clafien Associates  
Community Design Collaborative  
Concordia, Inc.  
Council of Real Estate  
Delaware Valley Green Building Council  
Delaware Valley Regional Planning Commission  
Education Alliance at Brown University  
Education First Compact  
Enterprise Center

KnowledgeWorks Foundation  
National Clearinghouse for Educational Facilities  
Philadelphia Chapter of the American Institute of Architects  
Philadelphia City Planning Commission  
Philadelphia Education Fund  
Philadelphia Home and School Council  
Pennsylvania Horticultural Society  
Philadelphia Public School Notebook  
Philadelphia Management  
The Rotunda  
University City District  
University City Review  
World Café Live





THE  
Franklin  
CONFERENCE  
SCHOOLS BY DESIGN: INNOVATIVE INTENTIONS